



DLB1550A BRAKE WINCH



WARNING: READ INSTRUCTIONS CAREFULLY BEFORE ATTEMPTING TO INSTALL, OPERATE OR SERVICE THIS WINCH. FAILURE TO COMPLY WITH INSTRUCTIONS COULD RESULT IN SERIOUS OR FATAL INJURY. RETAIN THESE INSTRUCTIONS FOR FUTURE REFERENCE.

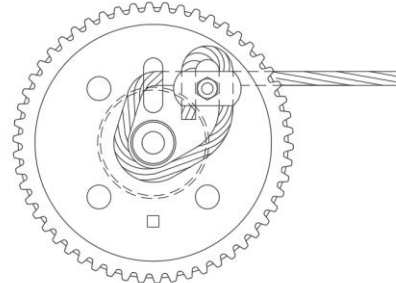
IMPORTANT SAFETY INFORMATION

- This brake winch is built for multi-purpose hauling and lifting operations. It is not to be used as a hoist for lifting, supporting, transporting people or for loads over areas where people are present.
- Respect this winch. High forces are created when using a winch, creating potential safety hazards. It should be operated and maintained in accordance with instructions. Never allow children or anyone who is not familiar with the operation of the winch to use it, a winch accident could result in personal injury.
- Check winch for proper operation on each use. Do not use if damaged. Seek immediate repairs.
- Never exceed the rated capacity. Excess load may cause premature failure and could result in serious personal injury.
This winch is rated on first layer of cable on the hub. Using more layers of cable increases the load on the winch.
- Never apply load on winch with cable fully extended. Keep at least three full turns of cable on the reel. Check cable on every use. Replace at the first sign of kinks, broken wires, deformation or any other damage.
- Secure load properly. When winching operation is complete, do not depend on winch to support the load.
- Operate with hand power only. This winch should not be operated with a motor of any kind. If the winch cannot be cranked easily with one hand, it is probably over-loaded.
- If winch will be used in freezing, icy conditions, apply silicone spray to ratchet pawl and spacer items V, W, X and Z. Do not spray other brake mechanism parts.

WINCH MOUNTING AND CABLE ATTACHMENT

For maximum strength and safety, this winch should be mounted with three 3/8" bolts, washers and lock washers (see parts drawing). Using fewer bolts or alternative locations will result in damage to winch base and the winch may malfunction.

Attach cable or rope by method shown in sketch.



OPERATING INSTRUCTIONS

Wind cable on the winch reel by turning the winch drive shaft in the direction shown on the parts drawing (also stamped in one side of the winch base). This should produce a loud, sharp, clicking noise. The load will remain in position when cranking stops. Winding cable off of the winch reel will not produce the clicking noise. The load will remain in position when handle is released, but for extra security it is recommended that the handle be turned clockwise until at least two clicks are heard. This will add extra tightness to the brake mechanism. Always satisfy yourself that the winch is holding the load before releasing the winch handle.

WARNING: If clicking noise is not heard while **raising** a load, the brake is not working properly. Maintain control and lower load. Seek immediate repairs.

WINCH MAINTENANCE

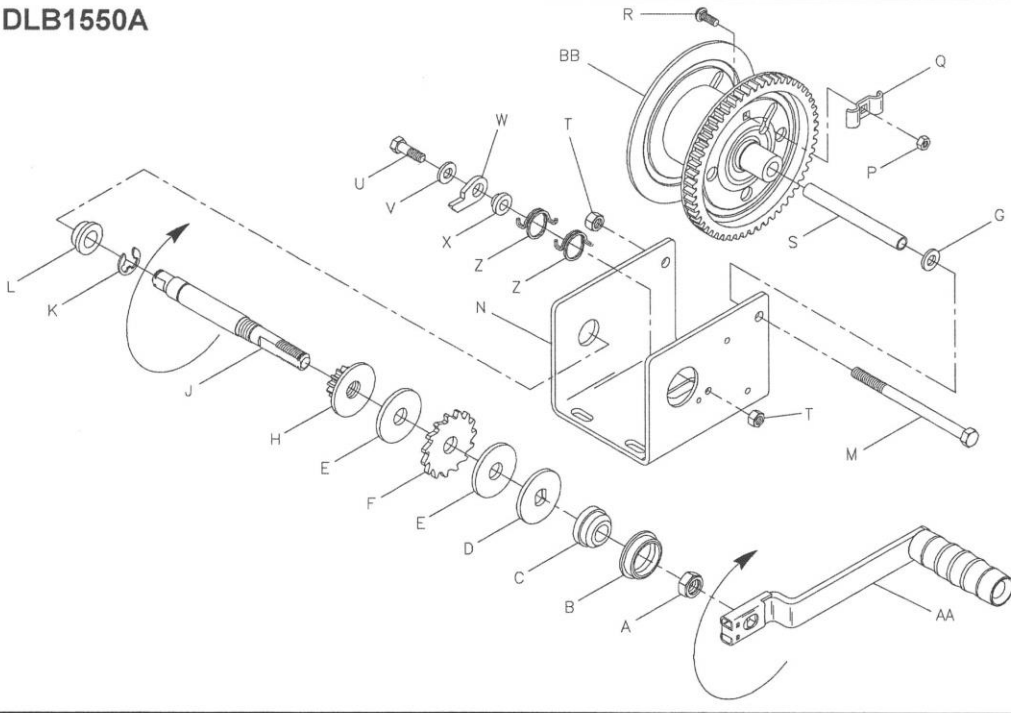
In order to insure maximum performance, a periodic inspection for any necessary preventive maintenance should be made. Check at least once annually and more frequently when the winch is exposed to an environment which is particularly dirty or wet. For continued smooth performance and increased life, occasionally grease gears and reel shaft. An occasional drop of oil on the drive shaft bearings and the inside of gear H is also recommended. If winch will be used in freezing, icy conditions, apply silicone spray to ratchet pawl and spacer items V, W, X and Z.

Note: Do not oil or grease brake mechanism items D, E and F.

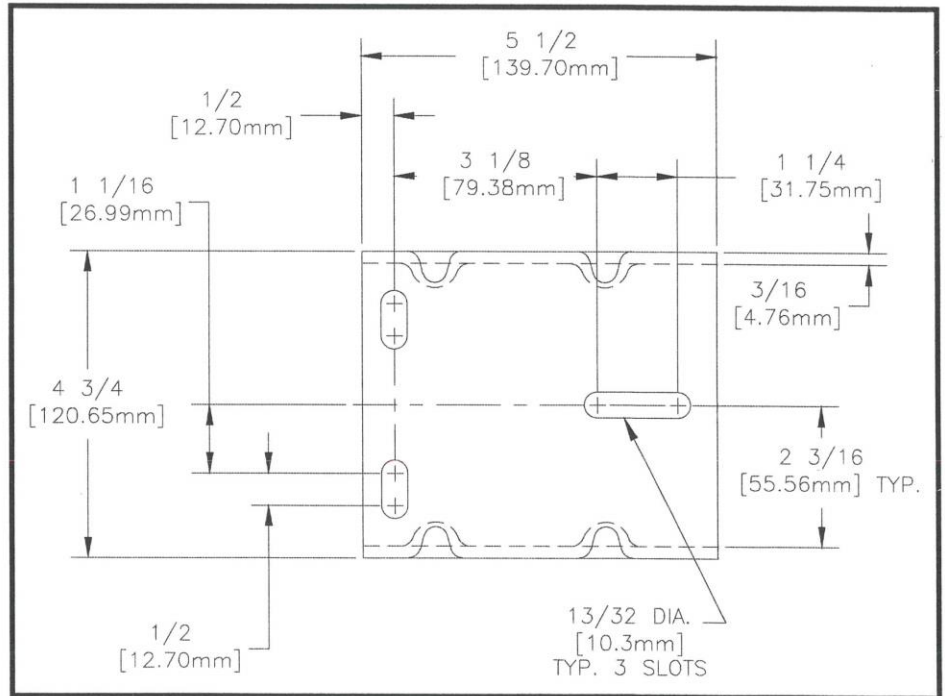
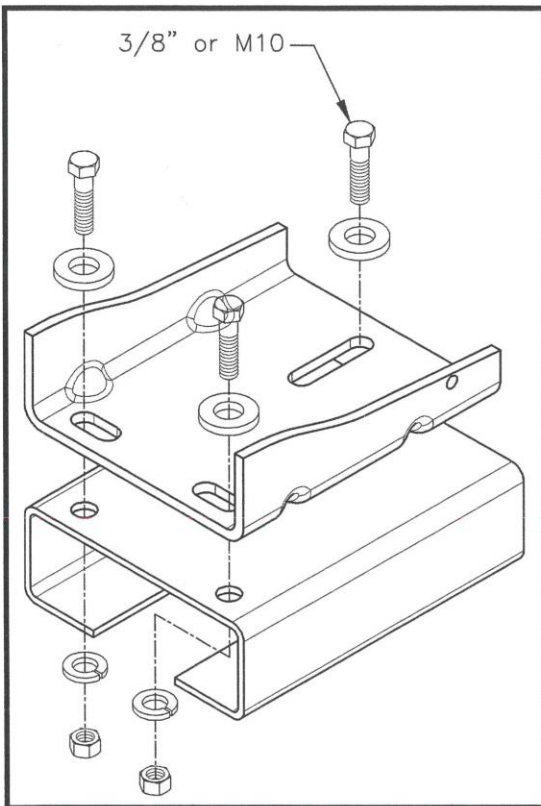
Keep winch in good working order. Damaged or severely worn parts create unnecessary dangers and could result in personal injury or property damage.

NOT FOR THE MOVEMENT OF HUMAN BEINGS

DLB1550A



| Ref | Description | Part No. |
|-----|-------------------|----------|
| A | Lock Nut | 404992 |
| B | Shaft Bushing | 206328 |
| C | Spacer | 404737 |
| D | Double D Washer | 404728 |
| E | Pressure Plate | 204362 |
| F | Ratchet Wheel | 404164 |
| G | Optional Washer | 204360 |
| H | Brake Hub Assy | 304968 |
| J | Drive Shaft | 404987 |
| K | E-Ring | 206162 |
| L | Shaft Bushing | 206163 |
| M | Reel Bolt | 204804 |
| N | Base | 404891 |
| P | Hex Nut, 1/4-20 | 205016 |
| Q | Rope Clamp | 404043 |
| R | Carriage Bolt | 205017 |
| S | Reel Spacer | 204808 |
| T | Lock Nut, 3/8-16 | 204803 |
| U | Cap Screw, 3/8-16 | 206652 |
| V | Flat Washer | 205055 |
| W | Ratchet Pawl | 404409 |
| X | Ratchet Spacer | 404725 |
| Z | Ratchet Spring | 204363 |
| AA | Handle Assy | 304294 |
| BB | Winch Reel | 304878 |



A Dependable Company Since 1886
DUTTON-LAINSON COMPANY
 Hastings, NE U.S.A. 68902 • Tel: 402-462-4141 • Fax: 402-460-4612
 www.dutton-lainson.com • dlsales@dutton-lainson.com

ISO 9001 Certified Q.M.S.

