

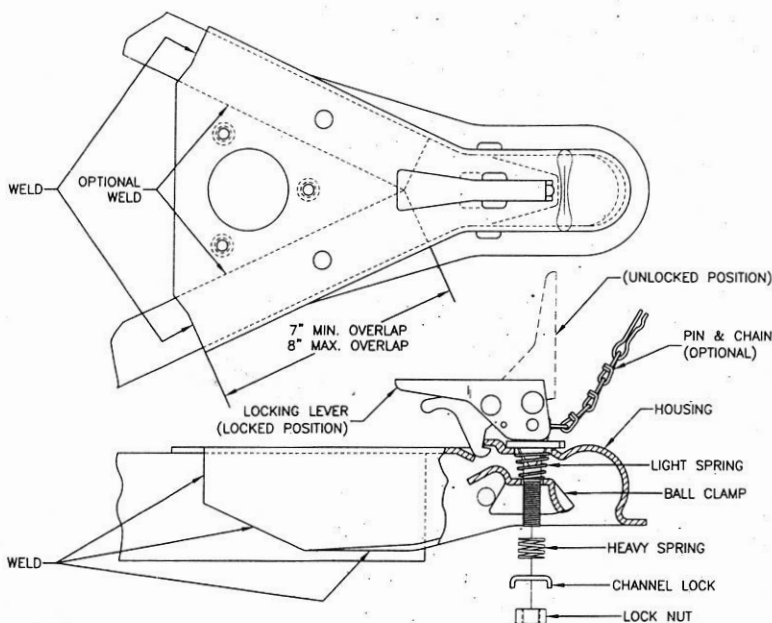
Model 990-3 Quick-Lock A-Frame Trailer Coupler

INSTALLATION INSTRUCTIONS

1. This coupler is designed to be welded to a 50° A-frame trailer. Make certain that the angle of the trailer frame fits exactly with the coupler housing.
2. The trailer A-frame must fit into the coupler housing at least 7" and no more than 8" as shown below.
3. When welding coupler to trailer frame, care must be taken to get good penetration without undercutting either coupler or trailer frame.
4. Weld entire top, sides and bottom edges of coupler to frame as shown below. These welds are critical and must be done by a competent welder.



CAUTION: MAKE CERTAIN THAT THERE IS NO WARPAGE OR WELD SPLATTER THAT COULD INTERFERE WITH PROPER OPERATION.



ASSEMBLY INSTRUCTIONS

1. Assemble all parts as shown in diagram above. Note: locking lever must be in unlocked position when assembling.
2. Adjust coupler to ball by raising channel lock and turning nut with fingers. Proper adjustment is obtained when coupler is as tight as possible on ball and locking lever can still be opened and closed. Check adjustment frequently and tighten if necessary.

OPERATION INSTRUCTIONS

Use only with a 2" diameter ball with a minimum 5000 lb. rating.

To Unlock – Pull locking trigger upward with index finger and lift locking lever.

To Lock – Push locking lever handle down. The optional locking pin or a padlock may be inserted in the locking lever hole for extra security.



WARNING: Every time coupler is used, make certain ball is completely engaged in socket and coupler is securely locked. Failure to do so could cause serious or fatal injury.

Safety chains must be used. Cross safety chains under coupling allowing only enough slack for turns.

MAINTENANCE & REPAIR INSTRUCTIONS

Do not use coupler with any bent or otherwise damaged parts. Repair Kit No. 6257 contains all parts except the housing.



WARNING: The component parts of this coupler should not be interchanged with the component parts of any other Dutton-Lainson Company model or other manufacturer's couplers.

SAE CLASS 3
MODEL 990-3

For gross trailer weights
up to 5,000 lb / 2270 kg

Max Tongue Wt.

15% GTW

This product complies with SAE J684 and VESC V-5 Standards.

U.S. Pat. No. 6481740 B1



A Dependable Company Since 1886

DUTTON-LAINSON COMPANY

Hastings, NE 68902 U.S.A. • Tel 402-462-4141 • Fax 402-460-4612
www.dutton-lainson.com • E-mail: dlsales@dutton-lainson.com

MADE IN
U.S.A.