



# 6400 SERIES TONGUE JACK



**WARNING** READ INSTRUCTIONS CAREFULLY BEFORE INSTALLING, OPERATING, OR SERVICING THIS JACK. FAILURE TO COMPLY WITH INSTRUCTIONS COULD RESULT IN SERIOUS INJURY. RETAIN THESE INSTRUCTIONS FOR FUTURE REFERENCE.

## ASSEMBLY

**Bolted Swivel Mount** Assemble jack as shown in the parts drawing making sure that the protrusion in the center of the clover washer enters the center hole in the swivel plate. Printing on the swivel bracket washer should not be visible after assembly. Tighten nuts evenly.

**Snap Ring Swivel Mount** Assemble jack as shown in the parts drawing and install retaining ring with snap ring pliers. Make certain that snap ring is securely seated in groove.

## MOUNTING

**Bolt-on** Place jack on trailer tongue in a location that avoids interference with the boat, trailer and tow vehicle during all conditions of use. Make sure the jack cannot contact the tow vehicle when making tight turns. Tighten all bolts evenly.

**Weld-on** Weld on jack brackets need to be installed by a competent welder. Determine location per instruction above.

After bracket is painted, assemble jack according to the parts drawing and assembly instructions above. Note that bolts (QQ) are self-threading and require considerable installation force.

**A-Frame** Insert jack through hole in coupler and secure with bolts, lock washers, and nuts. A removable wheel or foot can be purchased separately. **CAUTION** When using the removable wheel with tongue weights over 250lb/114Kg, a No. 6612 support plate should be securely welded to the bottom of the trailer frame. Failure to do so could result in jack and coupler damage.

## OPERATION

When jack reaches either end of its travel do not force handle or damage to the jack will result. When moving trailer by hand, crank jack to lowest position. Do not use the jack as a convenient hand hold. Avoid rolling jack over rough or soft surfaces. Raise jack completely before towing.

**CAUTION** Use of a swivel type jack without the swivel handle completely engaged could result in the trailer tongue suddenly dropping and could cause personal injury.

**CAUTION** Loads in excess of rating shown on jack label will cause accelerated wear and possible failure. This jack is not for highway use. Never tow trailer with load applied to jack.

## MAINTENANCE

Minimal maintenance is required to keep your tongue jack looking new and in good working order. Protect the finish by keeping it clean and waxed. Lubrication is needed if the jack cranks roughly or produces a grinding noise when operated. With weight off the jack remove jack from tongue. Remove end cap (MM). (See parts list on back page.) Remove pin (1) holding handle in place. Remove handle and miter gear (2). Turn jack upside down and shake gently to allow miter gear (3) to drop out. Align dowel pin (4) with hole in side of outer post assembly. Gently tap outer post assembly sideways allowing dowel pin to slip free from jackscrew and drop through hole in outer tube. Tap top of jackscrew to remove inner tube assembly. Do not attempt to remove screw from inner tube. Lubricate screw, thrust bearing (FF), and miter gears (2) and (3) with grease.

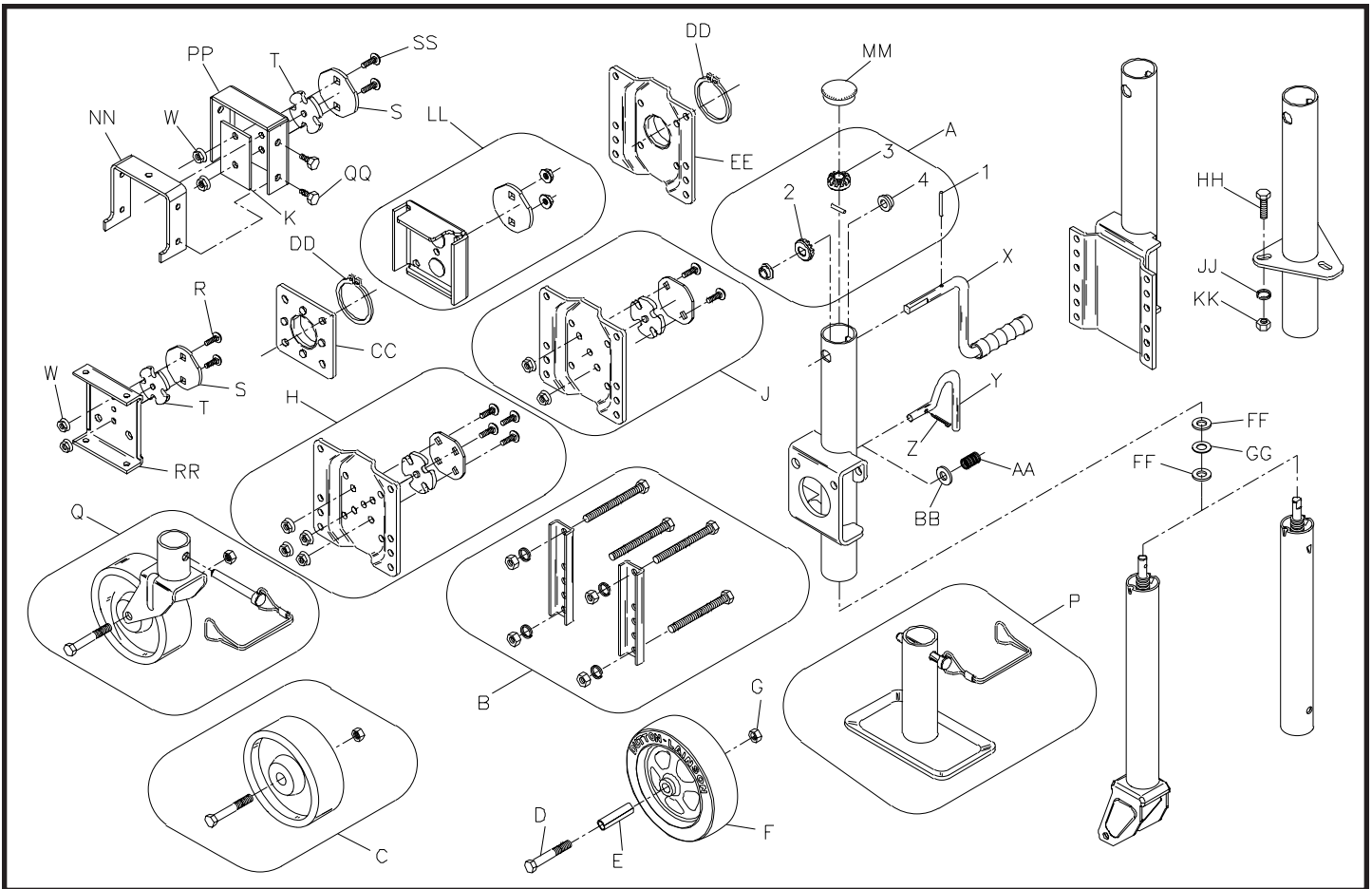
**CE** EC Declaration of Conformity – Dutton-Lainson Company, Hastings, NE 68902-0729 U.S.A. manufactures and declares that this jack is in conformity with the essential health and safety requirements specified in The Supply Of Machinery (Safety) Regulations 1992 and the provisions of The Machinery Directive (89/392/EEC). This declaration does not apply to other machinery using this jack.

*Ron Hease*



A Dependable Company Since 1886  
**DUTTON-LAINSON COMPANY**  
Hastings, NE 68902 U.S.A. • Tel 402-462-4141 • Fax 402-460-4612  
www.dutton-lainson.com • E-mail: dlsales@dutton-lainson.com

MADE IN  
U.S.A.



## 6400 Series Tongue Jack Parts List

Ref.	Description	Part No.	Ref.	Description	Part No.
A	6812B Miter Gear Kit	5224373	AA	Spring for 3/8" Dia. Swivel Handle	203818
B	6804 Clamp & Bolt Kit	5224431	AA	Spring for 1/2" Dia. Swivel Handle	207128
C	6" Wheel Kit (6806)	5224407	BB	Flat Washer for 3/8" Dia. Swivel Handle	205024
D	Cap Screw 1/2" - 13 x 3-1/4"	205267	BB	Flat Washer for 1/2" Dia. Swivel Handle	205029
E	Wheel Bushing	203476	CC	Weld-On Swivel Bracket, 3/8" Handle (6611)	403411
F	8 Inch Wheel	5224100	CC	Weld-On Swivel Bracket, 1/2" Handle (6616)	5226717
G	Hex Jam Lock Nut 1/2" - 13	203367	DD	Retaining Ring	203916
H	6808 Swivel Plate Kit (4 Bolt) for 1/2" Handle	5224258	EE	Snap Ring Swivel Plate	403413
H	6808 Swivel Plate Kit (4 Bolt) for 3/8" Handle	5224449	FF	Hardened Flat Washer (2)	207357
J	6809 Swivel Plate Kit (2 Bolt) for 1/2" Handle	5224266	GG	Plastic Thrust Washer	207356
J	6809 Swivel Plate Kit (2 Bolt) for 3/8" Handle	5224829	HH	Hex Bolt 3/8"-16 X 1" (3)	205043
K	Reinforcement Plate	403587	JJ	Lock Washer 3/8"-16 (3)	205042
P	Removable Foot & Clevis Pin (6606)	5225412	KK	Hex Nut 3/8"-16 (3)	205050
Q	Removable Wheel & Hardware (6605)	5225370	LL	Weld-On Swivel Bracket (6610)	5226675
R	Carriage Bolt 3/8"-16 x 1" (2)	205389	MM	End Cap	203943
S	Swivel Bracket Washer	403491	NN	Weld on Strap	403563
T	Clover Leaf Washer	403283	PP	Weld on Cover Bracket	403562
W	Flanged Lock Nut 3/8" - 16 (2)	205053	QQ	Thread Forming Screw (4)	203466
X	Jack Handle Assy w/pin (6810A)	5224464	RR	6684 4-1/2" Channel Mount Plate	403594
Y	Swivel Handle 3/8" Dia.	403486	RR	6685 5-1/2" Channel Mount Plate	403595
Y	Swivel Handle 1/2" Dia.	403487	RR	6686 6-1/2" Channel Mount Plate	403596
Z	Cotter Pin 3/32" X 3/4"	207094	SS	Carriage Bolt 3/8"-16 X 1-1/4" (2)	205372

To order these accessories or replacement parts contact your D-L dealer or

Pour commander ces accessoires ou des pièces de rechange, se mettre en contact avec le concessionnaire D-L ou

Para pedir estos accesorios o repuestos, comuníquese con el concesionario de D-L o con

**Dutton-Lainson Company**  
www.dlco.com  
Tel: 800-569-6577  
Fax: 402-460-4612  
e-mail: DLsales@dutton-lainson.com

**In Europe Contact:**  
**Bainbridge International Ltd.**

8 Flanders Park  
Hedge End  
Southampton  
Hampshire, SO30 2FZ  
UK  
Tel: 44 (0) 1489-776050  
Fax: 44 (0) 1489-776055  
www.bainbridgemarine.co.uk